

# FlexiCapture 9.0 Release 3 Release Notes

# Contents

- ABOUT THE DOCUMENT .....4
- ABOUT THE RELEASE .....4
- INSTALLING THE NEW VERSION .....4
- LICENSE USAGE .....4
- NEW FEATURES .....5
  - 1. ORACLE SUPPORT .....5
  - 2. LANGUAGE SUPPORT .....5
  - 3. FLEXILAYOUT STUDIO .....5
  - 4. DOCUMENTATION .....5
- IMPROVEMENTS .....6
  - 1. HIDDEN UNUSED QUEUES .....6
  - 2. AUTOMATIC FILL IN WITH SUGGESTIONS .....6
  - 3. HOT KEYS FOR COMMON OPERATIONS .....6
  - 4. NEW DOCUMENT STRUCTURE IS SUPPORTED .....6
  - 5. LONGER ELEMENTS' NAMES ALLOWED .....7
  - 6. MASK FOR BARCODES VALUES .....7
  - 7. CURRENCY NAMES ALLOWED IN THE RULE FOR COMPARING SUM IN WORDS AND IN DIGITS (RUSSIAN) .....7
  - 8. RESUME SENDING TASKS ON SCANNING STATION .....7
- CORRECTED ERRORS .....8
- KNOWN ISSUES .....8
  - General .....8
  - Installer .....9
  - Upgrade from previous version .....10
  - Scanning .....10
  - Import on Scanning Station .....10
  - Import from Hot Folders .....10
  - Project Setup Station .....10
  - Document Definition Editor .....11
  - Service fields .....11
  - Verification .....11

Workflow ..... 11

Export ..... 12

Processing Server ..... 12

Administrator and Monitoring Console ..... 13

Users' rights ..... 13

Database management (Administrator and Monitoring Console) ..... 14

Oracle support ..... 14

Rules ..... 14

Customization ..... 14

Errors in Standalone Installation Only ..... 14

Protection ..... 14

Languages support ..... 15

User's interface ..... 15

# About the Document

This document describes the new features and improvements of FlexiCapture 9.0 Release 3 and compares them to FlexiCapture 9.0 Release 2 with Spanish and Italian.

# About the Release

FlexiCapture 9.0 Release 3 is a maintenance release containing:

- Oracle BD support
- Debugging
- UI translation into Polish, Czech, Hungarian, Korean and Portuguese (Brazilian)

# Installing the New Version

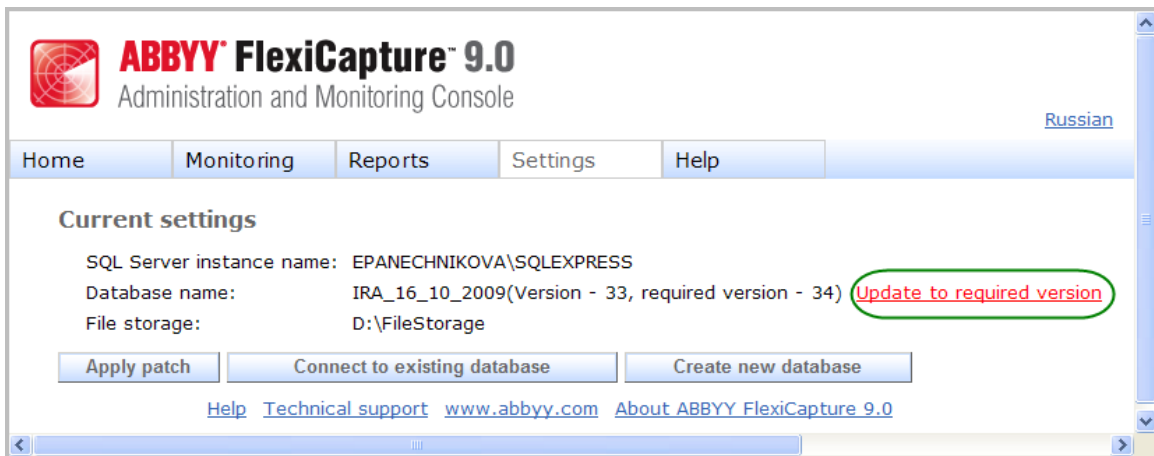
To update to the new version, it is necessary to install the new release. If the first or second release was installed on the same computer, the installer will detect it and update the program (uninstall the old version and install the new one in the same configuration).

Before starting the update, it is recommended to stop the Processing Server and Processing Station using the Processing Server Monitor, and stop all the stations running on the computer in which the update will be done.

There is no need to re-install additional components (IIS, .NetFramework, SQL server, Crystal Reports). After the upgrade, you may only need to turn on the basic authentication in IIS again if it was used (e.g., for remote stations).

You can use the existing database and file storage.

To update the database, click the “Update to required version” link on the Administration and Monitoring Console (Settings > Application Server):



Please note that projects opened in the new version cannot be opened in previous versions.

**Known issue:** Batch Types created in previous versions must be re-saved.

# License Usage

The FlexiCapture 9.0 Release 3 can work with the license generated for Release 1 or 2.

# New Features

## 1. Oracle support

The Oracle database can now be used for data storage in the Distributed version.

Supported Oracle versions: 10g and 11g.

To connect to the Oracle database and create a set of tables in the user's scheme from the Administrator and Monitoring Console, the user must have Connect and DBA roles.

Recommendations:

1. Install Oracle client on the computer where the Application server is installed
2. Always install the Oracle x32 client, even if the computer with the Application server is x64.
3. By default, an Oracle database allows a maximum of 40 processes and 49 sessions. Errors will occur if these limits are reached. If required, increase the default values by using a script similar to the following:

```
connect sys/<Login> as sysdba;  
alter system set sessions=<SessionCount> scope=spfile;  
alter system set processes=<ProcessCount> scope=spfile;  
shutdown immediate;  
startup;
```

## 2. Language support

### 2.1. UI localization

The program interface is localized for the following languages:

- Polish
- Czech
- Hungarian
- Korean
- Portuguese (Brazilian)

### 2.2. Tajik ICR

Tajik ICR is supported and included in the list of available ICR languages.

## 3. FlexiLayout Studio

### 3.1. Autocheckmarks

Autocheckmarks can now be used in FlexiLayouts.

## 4. Documentation

### 4.1. API help

An API help file is now available. It is installed with the Project Setup Station and can be found in the Start menu: Program > ABBYY FlexiCapture 9.0 Stations > Help.

The help file is available in English and Russian.

## 4.2. Tutorial for fixed forms and Getting Started Guide

A new tutorial that teaches users how to create a simple project for data extraction from fixed forms is installed with the Project Setup Station and can be found in the Start menu: Program > ABBYY FlexiCapture 9.0 Stations > Guides > Tutorials.

The Getting Started Guide contains a brief overview of FlexiCapture 9.0 and its uses. The guide can be found in the Start menu: Program > ABBYY FlexiCapture 9.0 Stations > Guides > Tutorials.

The tutorial and Getting Started Guide are also installed with Standalone.

These documents are available in English and Russian.

# Improvements

## 1. Hidden unused queues

Queues that are disconnected in workflow settings will not be displayed unless they contain documents.

## 2. Automatic fill in with suggestions

When the operator begins to type a value, the suitable value will be entered automatically.

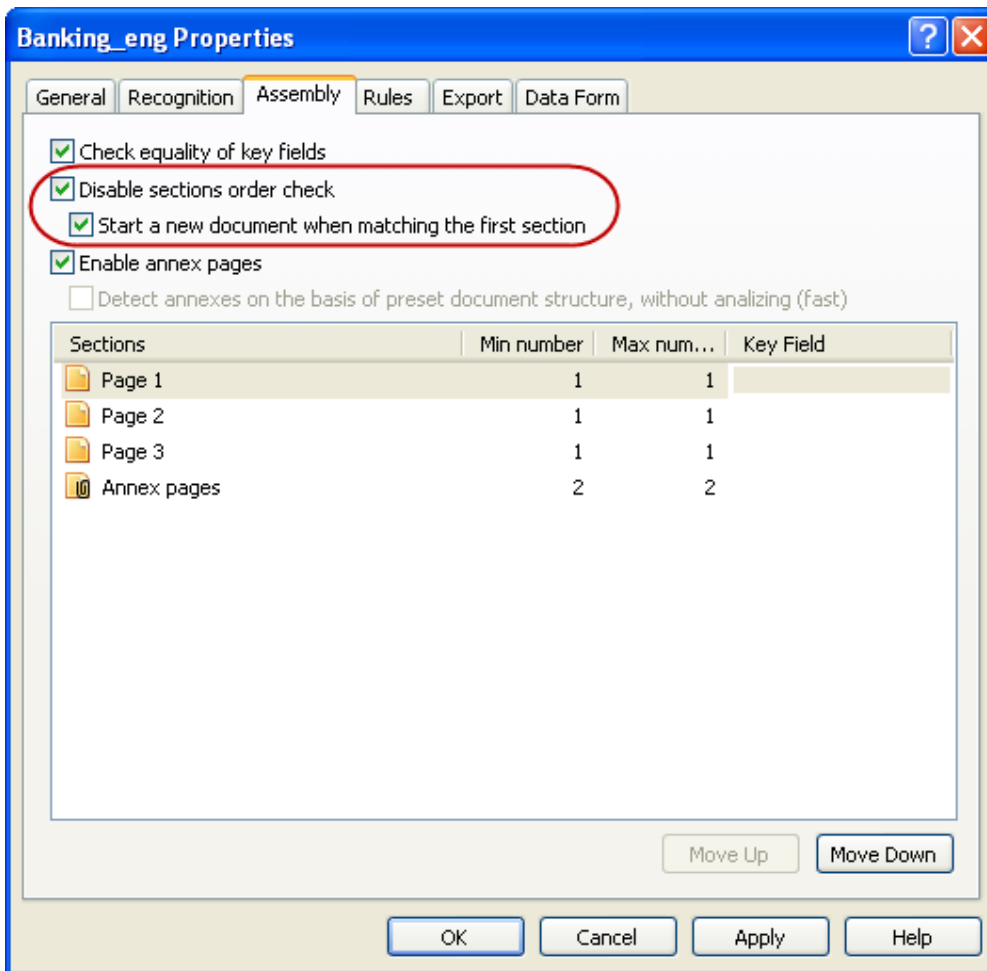
## 3. Hot keys for common operations

The following hot keys have been added:

- Close task – Ctrl+L
- Postpone task – Ctrl+Alt+L
- Send to Exception/Send to Stage – Ctrl+H
- Reject task – Ctrl+J

## 4. New document structure is supported

The beginning of the document will always be the first section; the order of the other sections is not important. To create a Document Definition with this structure, select the “Disable sections order check” and “Start a new document when matching the first section” options.



## 5. Longer element names allowed

There was a problem with long batch names in previous versions, creating errors if these names were used in a service field.

The length limitation for element (batch, document) names has increased from 50 to 256. The service field length limitation can be edited from UI.

## 6. Mask for barcode values

A mask can now be used to set up a range of values for separate barcodes. Use "\*" to replace several digits and "?" to replace one digit.

## 7. Currency names allowed in the rule for comparing sum in words and in digits (Russian)

In the rule for comparing sums in words and sums in digits (Russian) must be allowed rubles and kopeks.

## 8. Resume sending tasks on Scanning Station

In this version, the sending tasks are automatically resumed after failure due to network problems.

If The number of attempts is five; the interval between attempts is three minutes.

## Corrected Errors

1. **FlexiLayout Studio:** During pre-recognition of a particular image, the following error message occurred: Internal Program Error: .\RecPage\Text.cpp, 611.
2. **FlexiCapture:** During conversion of a project created in FC 8.0, a code page in export settings of the Document Definition Editor was converted incorrectly.
3. **FlexiCapture:** Service fields with page information were initialized incorrectly.
4. **FlexiLayout Studio:** The "Rowset position cannot be restarted" error message occurred when using database lookup to DB2 database.
5. **FlexiCapture:** Incorrect mapping of repeatable groups to database table.
6. **FlexiCapture:** The icons for odd and missed pages in thumbnail view are transposed.
7. **FlexiCapture:** An error message occurred when a Document Definition was checked after replacing the image file in a particular Document Definition.
8. **FlexiCapture:** FlexiCapture Distributed: batches were sent to verification in a random order.
9. **FlexiCapture: Distributed** installation on the Windows XP Processing Server and Processing station services was stopped after logoff.

## Known Issues

### General

1. After installing the application server on Windows Server 2008 (**64 bit**), the Administration and Monitoring Console may open with the following message:  
A runtime error occurred:  
Cannot get file storage path  
Details: Description: The request failed with HTTP status 503: Service Unavailable.  
This may happen if the RPC over HTTP Proxy component was installed on the computer.  
In this case, the FlexiCapture Web Services application pool stops.  
The following message will appear in the event log: «The Module DLL  
C:\Windows\system32\RpcProxy\RpcProxy.dll failed to load. The data is the error.»  
  
*There are two possible workarounds:*
  1. **Recommended:** Delete the RPC over HTTP Proxy component if it is not needed. Restart the computer.
  2. Find the `c:\windows\system32\inetsrv\config\applicationhost.config` file.  
Find the following line in this file:  
`<add name="PasswordExpiryModule"  
image="C:\Windows\system32\RpcProxy\RpcProxy.dll" />`  
Replace this line with the following:  
`<add name="PasswordExpiryModule"  
image="C:\Windows\system32\RpcProxy\RpcProxy.dll"  
preCondition="integratedMode, runtimeVersionv2.0, bitness64" />`  
When trying to save a changed file, a message that the system cannot save changes may appear. The changed file can be saved with another name, then delete the old file and replace the name with the original one. Restart the computer.
2. The database size is limited to 600,000 pages. When exceeding this size, tasks begin to fail. The Processing Server Monitor also doesn't respond if the database size increases.
3. The Application Server is installed on Windows 2008. If a station or server is not on the same computer when the Application Server is located, and a user without proper rights tries to launch it, the error message is not clear ('http://baikal-2' (HTTP Error 500)).

4. Servers' installer for OS x64: Servers are successfully installed, but FlexiCapture Web Services cannot run.

As a result, the following error occurs on the Monitoring console:

A runtime error occurred:

Cannot get file storage path

Details:

Description: The request failed with HTTP status 503: Service Unavailable.

*Workaround:* install .NetFramework 2.0 x32 and restart.

5. UAC prevents the Monitoring Station from connecting to the database or creating a new one. UAC should be disabled while the system is being set up. When trying to connect to the database, the user will receive the following message: "You need FlexiCapture Administrator permissions to open this page".  
*Workaround:* Disable UAC.
6. If the Monitoring Operator deleted the Project Setup session, the Project Setup Operator can still create a Document Definition, but the Internal Program Error may occur if the properties are attempted to be viewed. After deleting the session it's recommended to re-launch the Project Setup Station.
7. When using FlexiCapture 8.0 and 9.0 on the same computer, use the following instructions: after closing FC 8.0 the background processes, continue working for two minutes. If during this period the user launches FlexiCapture 9.0 and tries to recognize images, the program will use the opened FlexiBR.exe and the recognition won't start.  
*Workaround:* stop FlexiBR.exe processes and re-launch FlexiCapture 9.0.
8. When several operators try to get tasks from the same queue, some of them may receive the message: «No active tasks». It may also happen if a user receives the task of another user. Repeat the attempt to get tasks or use the automatic mode of getting tasks.
9. If there are a lot of Processing Stations and a lot of operators, the following error may appear in the task's log: «An existing connection was forcibly closed by the remote host». This error can be ignored, as it doesn't impede normal work. If it does, please contact our technical support.
10. The **Exported to** field is not always filled in for projects on the server.
11. The Scanning station and remote Data Verification stations don't display the license type ("Trial"/"Not For Resale").
12. A warning will appear when uploading a project to the server if export paths are relative and the root folder is not indicated. In this case, export results will be stored as document attachments and can be accessed via API only.
13. During verification of large documents (70+ pages) with a lot of text and numerous errors, page opening may slow down and a "not enough memory" error may occur.
14. If the user changes the name of a project and the path is longer than 255 characters, a warning is issued; if the warning is ignored and the name is changed, the project will not be able to be opened.

## Installer

15. The uninstall program may require Outlook and other applications to be closed. Simply click "Ignore" to continue with the uninstall process.
16. If FormReader 6.5 and FlexiCapture 9.0 are installed on the same machine, uninstalling FlexiCapture 9.0 will make ISIS scanning unavailable in FormReader 6.5. To avoid this problem after FlexiCapture 9 has been uninstalled, re-register the ISIS Scan Server by typing in the following command line: "[installation folder 6.5]\ISIS\ISISScanServer.exe" –regserver
17. This error can only occur after using Beta version and re-installing the Processing Server from the new version on the same computer. After re-installing the Processing Server, the settings of the Server will not save after changing them and restarting the Server. Therefore, if you configure the list of Processing Stations and change the Application Server or other settings, they may be lost after restart.  
*Workaround:* After uninstalling the Beta, delete the file ServerSettings.xml (C:\Documents and Settings\All Users\Application Data\ABBYY\FlexiCapture\9.0\FlexiBrSvc\ServerSettings.xml) and

then install the new version. If you have already installed the new version, find this file and give access rights to everyone.

## Upgrade from previous version

18. After upgrading the database from the previous version, the registration parameters will not work correctly.  
*Workaround:* Re-save batch types in a new version of the program.
19. The old document definitions checkmark groups may indicate that they need verification, even though all data is verified and correct.  
*Workaround:* Delete old groups in the Document Definition Editor and create new groups.
20. It is not possible to import templates made in Cognition. The following error occurs: Internal Program Error: .\Forms\XMLLog.cpp, 295.

## Scanning

21. Kodak i1320 (WIA) scanner—duplex scanning is selected in the FlexiCapture scanning dialog, but only one page is added.
22. An error occurs when scanning images with compression using Citrix.
23. It is not possible to scan via WIA using XEROX scanners.
24. Scanning Station—if a network connection was broken during scanning, the scanners may disappear from the list. This happens due to protection problems (the protection server is on another computer).  
*Workaround:* restart Scanning Station.
25. Rescan functionality—if the batch was sent to the rescan queue and all pages were deleted, the scanning operator cannot receive the task.  
*Workaround:* don't delete pages before rescanning.

## Import on Scanning Station

26. It is not possible to add a password-protected PDF file.
27. When the virtual scanner (import from folder) is used, the "Remove successfully loaded files" option is turned on, and the Scanning Station is closed during import, the file would be deleted but not imported.

## Import from Hot Folders

28. After importing images from the Hot Folder subfolders and successfully moving them to the Processed folder, the images are stored in this folder together without maintaining the structure.
29. Some tasks of importing from the Hot Folder subfolders fail with the following error: "Error 06.07.2009 13:32:03 \\baikal-2\HF\hf1\нкU312\Banking\_eng.pdf was not found". The mentioned file exists and is imported successfully on the next attempt.  
*Workaround:* 1) transfer the Hot Folder to the server OS; 2) check the Hot Folder less frequently (increase the time of Check Hot Folder every...); 3) decrease the Processing Station quantity, which can execute import operations.
30. If the "Number of files to add" setting is equal to "Several files," the files that were not successfully imported are placed into the *Exception* folder instead of the *Exception\Batch name* folder.

## Project Setup Station

31. According to the Document Definition Settings, there is no button or menu item to export documents to the Project Setup Station.  
*Workaround:* use the ctrl+U hotkey combination for testing the export in the Project Setup Station.
32. When a project is created in the Standalone version and the autoexport option is opened on the Project Setup Station, the autoexport will work on this station but cannot be turned off. If the project is on the server, the autoexport will work for test batches only.

*Workaround:* turn off the autoexport in the Standalone version before using this project in the Distributed version.

33. It is not possible to turn off the “Check Hot Folder every...” option for inaccessible Hot Folders. It should be turned off, because Processing Stations try to import from this HotFolder and the tasks fail. However, it cannot be turned off because the correspondent tab isn’t accessible. The only solution is deleting this profile.
34. Sometimes, batch statistics (in the Project Setup Station) take a very long time to be updated.  
*Workaround:* open and close the batch.

## Document Definition Editor

35. Document Definition Editor/Export Destination Wizard/Export to Database—if the user creates columns automatically and changes the storage of the images in the next step, it will not be possible to export the images due to the incorrect setting (the column in the database doesn’t have a proper type). The image storage should be indicated before creating database columns.  
*Workaround:* don’t create columns at this stage—they will be created automatically before export. Alternate method: don’t create columns, change image storage, save export settings and then open these settings for editing. In this case, you can automatically create columns and it will be correct.
36. Applying the Duplicate command to the unrecognized region may result in an internal program error.

## Service fields

37. The Document Export Time value is not exported.
38. After exporting the values, the document last Edit Time and Info contain the time of export and the name of the user who exported the documents. It should also contain the time and name of the user who last redacted a document before the export.
39. When checking a Document Definition, the service fields are considered to be "excess fields."
40. If the service field value changed after recognition (e.g., number of pages has been changed), the rule in which this field participates is not re-calculated.  
*Workaround:* Apply the Re-Check Rules command. The rule is also re-calculated after any modification of document data.

## Verification

41. The number of displayed uncertainly recognized characters is a little higher than the real number of uncertainly recognized symbols. The statistics of symbols for verification are confused with the statistics of uncertain characters. (e.g., fields marked for obligatory verification are also added to the statistics of uncertainly recognized characters).
42. During field verification, the value of the Read-only field can be changed.
43. The "Set cursor to the first uncertain character" option doesn’t work for long fields if the first uncertain character is at the end of a field.
44. Right-clicking on a page with an assembly error in thumbnail view causes the disappearance of the assembly error message and a blinking screen.
45. Internal program errors may occur when using drag & drop in thumbnail view. IPEs are different than other errors and are difficult to repeat.

## Workflow

46. Unattended mode—after unrecognized images have been exported, their status is displayed in “Project Setup Station is Ready for: Verification,” although they have been successfully exported.
47. Unattended mode—the “Delete documents after export” option is on. The documents are always deleted, even though the export was not successful.
48. If the import task passes from one Processing Station to another (e.g., if the first one was stopped),

two import tasks appear and two batches are created as a result. The second batch is not routed, and its recognition does not start. This error may be caused when documents are in the recognition queue while the batch is in the <not processing> status, resulting in the recognition task not starting.  
*Workaround:* start recognition of the second batch manually.

49. If the import task was cancelled (manually or because the Processing Server is stopped), some of these documents or all documents aren't sent automatically to recognition.  
*Workaround:* send documents to recognition manually.
50. The <Unprocessed> documents skip verification if the "Skip verification and data verification if percentage of uncertain characters is equal or less then..." option is selected. Those documents go to the export stage. If the export fails, they go to the exception stage.
51. If one of the documents from the group cannot be exported, the entire group goes to the exception stage. If the "Export entire batches" option is off, only the documents that couldn't be exported should go to the exception stage, and the others should have a processed status.
52. If the operator received a task, deleted all documents and closed the task, the empty task will be sent to the next stage instead of being deleted. If the operator attempts to get the empty task, an «Empty Task» or «No active tasks» message will be displayed, and the task will be deleted.

## Export

53. If there are only group instances in the Document Definition, the parent and child tables are not linked correctly.
54. Export of unrecognized documents—the "Overwrite existing files" option doesn't work correctly and it overwrites all files of the same name.  
*Workaround:* use the file naming scheme that doesn't allow receiving files with the same name. (e.g., DocumentId can be included in the naming scheme or create a folder for every batch).
55. An error can occur with one document while exporting a group of documents. In some cases, all documents from this group will have a processing error and will be routed to the exception stage.
56. When exporting to a table, an error message about incompatible column types in another table may occur.
57. The Document Definition contains repeats inside other repeats. An internal program error occurs during export to XLS.
58. Unknown document naming settings include tags which don't apply to document definition and index field documents. The following error occurs during export when using the index fields:  
Internal Program Error: .\Project\MonikerImpl.cpp, 313.

## Processing Server

59. If there are many Processing Stations and the autorun option is on, the Processing Server response time is delayed while trying to run those stations.  
*Workaround:* don't turn the autorun option on for stations and launch them manually.
60. The Processing Server may not respond if the "Remove completed tasks from the list" option is turned off, or if many tasks are executed simultaneously. The Processing Server Monitor may not appear for a long time if it is closed, even though the process StationMonitor.exe has been launched. Please wait for the Processing Server window to appear.
61. The FlexiEx.exe processes sometimes don't close. They don't affect regular workflow, but it indicates that the processor's memory is busy.
62. The Project path and Batch columns are always empty in the Processing Station Monitor.
63. Sometimes a task contains only errors, but its status is "successful." It does have a red mark, however, so the user can see that it has errors.
64. If the gap between the Processing Server and Processing Station time is more than 24 hours, the Station cannot work correctly (it finishes all tasks with errors). The launch of such stations should be prohibited.
65. If the protection of the Processing Station fails, the station finishes all tasks with an error. It should return those tasks to other stations.

66. The Processing Server requests new tasks when it has free Processing Stations. However, the Server doesn't check if free Stations can execute all operation types (Import, Recognition, Export). If, for example, some stations can only execute import tasks, the recognition tasks enter the queue and stay pending. The queue of pending tasks may significantly increase in this case.
67. If a Processing Station stops, and export tasks move from this station to another, the documents are exported twice.
68. If the connection of the Processing Station with the Processing Server was lost, the Processing Server must be restarted in order to run stations.
69. If the user stops HotFolder checking, all import tasks are cancelled. If the Processing Station service is stopped while the Processing Station Monitor is running, the user will see messages such as "The interface is unknown."
70. If the Processing Server was stopped, the documents currently in process will stay at the processing stage and don't route to recognition automatically.  
*Workaround:* send the documents to recognition manually.
71. Sometimes the Processing Station stops and cannot be restarted.  
*Workaround:* restart the Processing Station service (FC Processing Station).
72. During load testing, the Processing Station wrote several errors to the log:  
«ERR\_DBMNGR\_SESSION\_DOES\_NOT\_EXIST in method  
FlexiCaptureWebServices::CFlexiCaptureWebServices::SetCurrentTask»

## Administrator and Monitoring Console

73. The user can connect to an existing database that was previously used with some file storage. If the user forgets to specify the file storage or enters the storage incorrectly, no error will be displayed and the connection to the database will be successful. However, the following error occurs when the user tries to open the project: *Unable to access Project's options ('http://baikal-2/40190958-5A70-4A68-A612-3DCFAB80757C/SingleEntryPoint'). This object is corrupt ()*.
74. FlexiCapture 9.0 Release 3 does not support SQL2000. Trying to create a Database on SQL2000 from the Monitoring and Administration Console triggers this unclear error message:  
A runtime error occurred:  
Exception of type 'System.Web.HttpUnhandledException' was thrown.  
Details:  
Description: Could not find stored procedure 'Session\_GetActiveStations'. ...
75. If the operator confirmed certain characters and saved the changes, but didn't close the task and then closed the Station, confirmed characters aren't counted in the verification operator reports.
76. If there are some filters using a date, an error occurs when the UI language is changed. The user will be able to change the UI language only after deleting all filters that use that date.
77. Attempting to delete a user with a current task results in an error.
78. Exception tasks are not included in the Verification Operator's report.
79. The user rights displayed on the user's page don't include the rights inherited from the group(s) to which the user belongs.
80. If the Event log contains 4 million records or less (processing of approximately 400,000 pages), it cannot be saved in csv format.  
*Workaround:* apply filters before saving in csv.
81. The number of documents with corrected rule errors may have a negative value in the reports. This happens if the operator splits a document with a rule error into two documents and the number of documents with errors increases.

## Users' rights

82. The scanning operator can create a batch type in the Scanning Station and set up an export to any FlexiCapture batch type, even if the operator isn't allowed to access that type. This action creates errors when exporting batches to FlexiCapture using this batch type. The operator should be able to use only those batch types to which he or she has access.

## Database management (Administrator and Monitoring Console)

83. If the SQL Server is installed on Computer A, and the Application Server is installed on Computer B, it is not possible to create a database from Computer C using Windows-authentication.
84. No warning message is displayed when the storage is full.  
If your database is full, you can create a new one or contact our technical support.  
To avoid this situation, use file storage or the SQL server without size limitation.
85. During recreation of a database, some errors appear in the Application Server log, even though the database creation was successful.
86. An error occurs during project deletion if anonymous access is allowed in IIS 5.1 (XP).  
*Workaround:* Prohibit anonymous access to the Default Web Site folder in IIS 5.1.

## Oracle support

87. We cannot work with Oracle x64 drivers on OS x64. The client should always install Oracle x32 client, even if the computer with the Application server is x64.
88. Sometimes the following error occurs when connecting to the database: «The underlying connection was closed: An unexpected error occurred on a receive.». The error occurs after the Oracle 10g client is installed on the same machine where Oracle 11g client was installed.

## Rules

89. Data type "Date", the date and time without seconds «20/01/04 02:31 PM» is considered incorrect.
90. DataBaseCheck Rule—text values can't be compared with values of special dates or numbers from the database and vice versa.
91. The "Sum in figures - sum in words" rule for the Russian language doesn't work with fractional numbers.
92. Incorrect tip for the "Amount of Money" field; for the value "14.434.78", the tip is "1,443,478.00".

## Customization

93. Post export script should only run after the export is defined in Document Definition, but it runs after manual export.
94. API—the message of Processing Server received at the "Preprocess document..." stage isn't written in the ErrorText of the document. The document has properties: IsProcessed = True, HasProcessing Errors = False.
95. API doesn't allow document separation to be set up by barcodes or empty pages for the following reason: the document separation set in the batch type does not work if images are added to the batch via API methods. The following error occurs if a task is closed via API without being opened previously: "The UPDATE statement conflicted with the FOREIGN KEY constraint "FK\_Document\_ProcessingStage". The conflict occurred in database "db\_9\_2400", table "dbo.ProcessingStage", column 'Id'."

## Errors in Standalone Installation Only

96. The batch integrity check doesn't work with autoexport.
97. In Standalone, the batch priority can be changed but it doesn't affect the processing. The priority is not used in Standalone.
98. Autoexport is on—if the recognized document was split into pages and recognized one more time. It is assembled correctly after recognition, but then it is exported two more times.

## Protection

99. An entered but inactive serial number is not saved in the License Manager. The user should retype the serial number when he or she uses e-mail activation.

100. An expired license cannot be deleted using the License Manger UI.
101. If the license cannot be deactivated (deactivation limit is exceeded), the server still reports that the license is successfully deactivated.
102. When the “Count recognized pages only” option is on, pages re-exported several times to searchable PDF will be counted several times. We advise not to use the “Count recognized pages only” option if export to searchable PDF is necessary.

## Languages support

103. All letters are separated by spaces when FlexiCapture creates a PDF in Vietnamese. The problem is corrected for PDF/A only.
104. FormDesigner—when using the default font, Chinese static text isn’t displayed correctly.  
*Workaround:* change the font. The last used font will be a default font for created fields.
105. Administrator and Monitoring Console—reports in Chinese and Korean cannot be exported to PDF. Please use CSV until this is corrected.

## User’s interface

106. The name of queue Rescan will only appear in English.